

Look  
at Us  
*and* View  
the  
Difference



**WORLDSCREEN**<sup>®</sup> INC.  
Shading Systems

# WORLDSCREEN<sup>®</sup> INC.

Shading Systems

WORLDSCREEN'S shading system provides an attractive way to block the sun and not your view. Our 100% American made sleek design and a wide variety of fabric choices will greatly reduce glare, block harmful UV rays and conserve energy. Air-conditioning loads can decrease over 60% with exterior mounted shades and over 22% when mounted inside. Installed inside or outside, you will cool your space while protecting your treasured belongings from fading.

Worldscreen's model 40-16 features a uniquely small 3 1/8" square cassette that blends in seamlessly with your trim yet can span an unmatched 40ft in width and up to 16' of drop without any fabric splits.



## Automation

Your new motorized screen can easily be automated with optional sun sensors and timers for the ultimate in convenience and energy control. In addition, Worldscreen's shades can easily be intergrated with building automation systems including lighting, climate control and audio visual systems from all the leading manufacturers.

## We Block the Sun...Not Your View



Here, an interior mounted MicroCassette Solar Shade concealed behind the drapery provides climate and sun control while maintaining design flexibility



Outside, the MicroCassette features either guide rails or cable guides to keep your solar screen stable. Our impressive, sleek cable system features color matched cables and hardware.

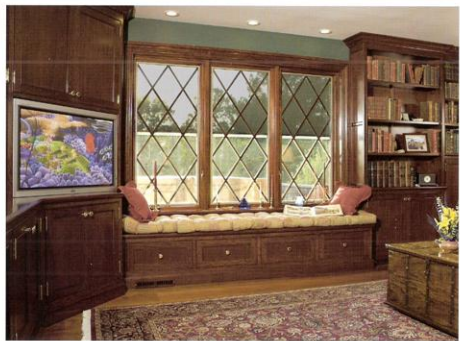


# RESIDENTIAL



## Energy Savings

Your new motorized solar shades will reduce sun glare, protecting your furniture and décor from fading and can reduce air conditioning loads by more than 60%.





Exterior Solar Shade partially lowered



Exterior Solar Shade fully retracted

It might look like magic, but it's actually just brilliant design. Worldscreen solar shades and blackout shades control light and temperature while blending into exterior architecture or interior design. Exterior shades, as seen above, feature a matching rail or cable guide system to control the shade from blowing in the wind."



# COMMERCIAL

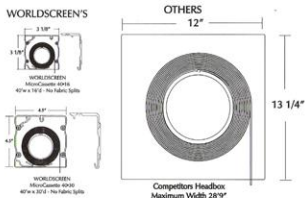


Whether your sun control needs are residential or commercial, interior or exterior, a Worldscreen Micro-Cassette system will provide sun protection or privacy.

Worldscreen's Micro-Cassette 40-16 can span up to 40 feet wide by a drop of up to 16 feet in an incredibly small 3" x 3" cassette. Our amazing Micro-Cassette 40-30 spans 40 feet wide by a 30 feet drop in a 4 1/2" x 4 1/2" cassette.

Our unique patented floating roller tube system assures you of virtually wrinkle-free fabric up to 40 feet wide with no fabric splits.

## CASSETTE SIZE COMPARISON



Shown here is a 40 ft. wide wrinkle-free model 40-16 Micro-Cassette. The ability to span from 3 ft. to 40 ft. wide provides you with clean uninterrupted views and maximum energy control. Other brands cannot span more than 16 ft. without having wrinkles and "smiles" in the fabric.

**WORLDSCREEN**  
MicroCassette40•16

## SPECIALTY APPLICATIONS

" Specialty applications such as retractable graphic screens, projection screens, clear windows and room darkening shades add to the broad range of functionality of both the Microcassette 40-16 and 40-30 systems."



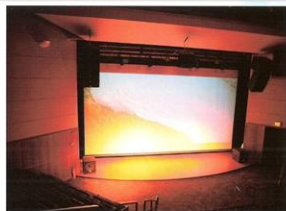
Graphic screens provide retractable signage that you can see through from the inside while also providing sun protection.



Retractable weather protection with clear vinyl windows for porches, restaurants and patio enclosures.



Worldscreen systems can also be used for room darkening and home theater projection screens providing a complete and integrated solution.



Worldscreen's Microcassette 40-30 shown here houses a massive 26' wide x 15' drop Video screen. We make projection screens from 50" to 360" diagonal all housed in our Microcassette system.

## FEATURES

### **MicroCassette40•16**

- 3 1/8" x 3 1/8" cassette
- 40' uninterrupted fabric spans
- 16' fabric drop maximum

#### **Exterior Solar Screen guide system**

- Color Matching Rail
- Color Matching Cable
- Paintable Cassette

#### **Motorization**

- Radio Control Motors
- Remote controls
- Sun & Wind sensors
- Timers
- Home automation interface

**5-Year Limited Warranty**

### **MicroCassette40•30**

- 4 1/2" x 4 1/2" cassette
- 40' uninterrupted fabric spans
- 30' fabric drop maximum

#### **Exterior Solar Screen guide system**

- Color Matching Rail
- Color Matching Cable

#### **Motorization**

- Radio Control Motors
- Remote controls
- Sun & Wind sensors
- Timers
- Home automation interface

**5-Year Limited Warranty**

Authorized Dealer:



**WORLDSCREEN** INC.  
Shading Systems

843 Echo Lake Road  
Watertown, CT 06795  
[www.worldscreeninc.com](http://www.worldscreeninc.com)

Part of the Eastern Awning Systems® Group

**PATENTED • 100% AMERICAN MADE**

- Solar Shading Systems
- Blackout / Room Darkening
- Video Projection Screens
- Graphic Printed Shades

Copyright 2007 Worldscreen, Inc.

**CAUTION:** Worldscreen's patented Microcassette is the only product in the world capable of spanning 40ft wide in a 3 1/8" square cassette. Due to the nature of woven fabrics, it is very difficult to find a flawless product and therefore some flaws may be expected. Some manufacturers' fabrics roll better, lay flatter, and have fewer to no flaws. Please consult your dealer for a recommendation of fabrics to best suit your project.